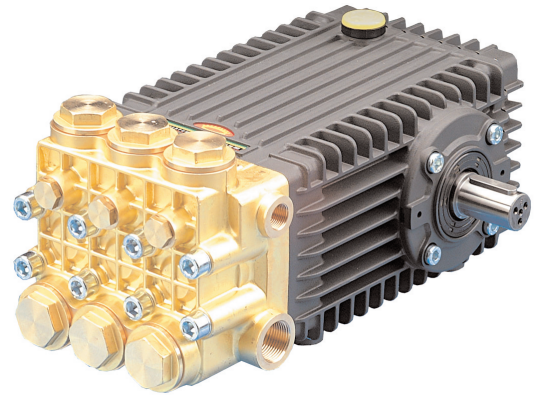


FEATURES

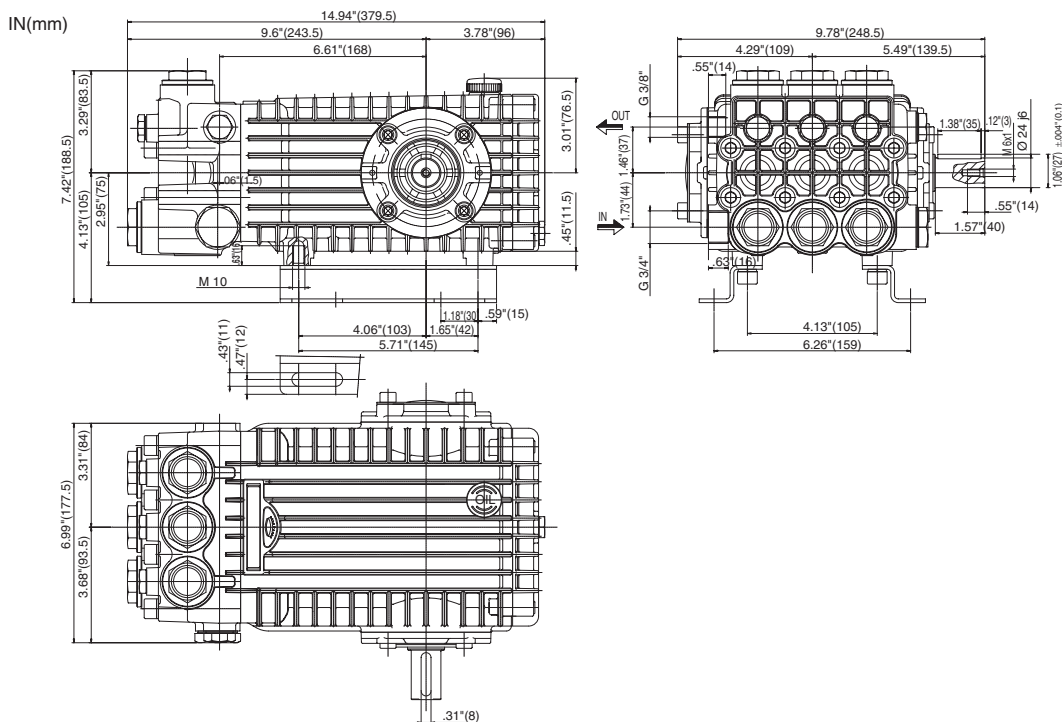
- Oversized roller bearings
- Fully anodized crankcase
- Innovative new seal design extends seal life
- New plunger design improves “thermal shock” resistance
- New valve cap design improves hydrostatic performance



SPECIFICATIONS

| Pump Model | TSF2019 | TSF2019 Alternate Spec | TSF2021 | TSF2021 Alternate Spec | TSF2219 | TSF2219 Alternate Spec | TSF2221 | TSF2221 Alternate Spec |
|-------------------------|--------------------------|---------------------------|------------------|---------------------------|------------------|---------------------------|------------------|---------------------------|
| Maximum Volume | 7.6 GPM | 6.3 GPM | 8.5 GPM | 7 GPM | 9.3 GPM | 7.7 GPM | 10.2 GPM | 8.5 GPM |
| Max. Discharge Pressure | 3600 PSI | | | | 3000 PSI | | | |
| Horsepower | 18.7 BHP | 15.5 BHP | 21 BHP | 17.3 BHP | 19.1 BHP | 15.8 BHP | 21 BHP | 17.5 BHP |
| Maximum Pump Speed | 1750 RPM | 1450 RPM | 1750 RPM | 1450 RPM | 1750 RPM | 1450 RPM | 1750 RPM | 1450 RPM |
| Maximum Inlet Pressure | 125 PSI | | | | | | | |
| Maximum Inlet Vacuum | 9 ft. water / 7.9 in. Hg | | | | | | | |
| Bore | .787 in. / 20 mm | | | | .866 in. / 22 mm | | | |
| Stroke | .748 in. / 19 mm | | .826 in. / 21 mm | | .472 in. / 19 mm | | .826 in. / 21 mm | |
| Crankcase Oil Capacity | 31.0 oz. | | | | | | | |
| Max. Fluid Temperature | 165°F | | | | | | | |
| Inlet Port Thread | 3/4"-14 BSP-F | | | | | | | |
| Discharge Port Thread | 3/8"-19 BSP-F | | | | | | | |
| Shaft Diameter. | .945 in. / 24 mm | | | | | | | |
| Weight | 40.7 lbs. / 18.5 kg | | | | | | | |
| Dimensions | 13.27 x 9.6 x 6.23 in. | | | | | | | |

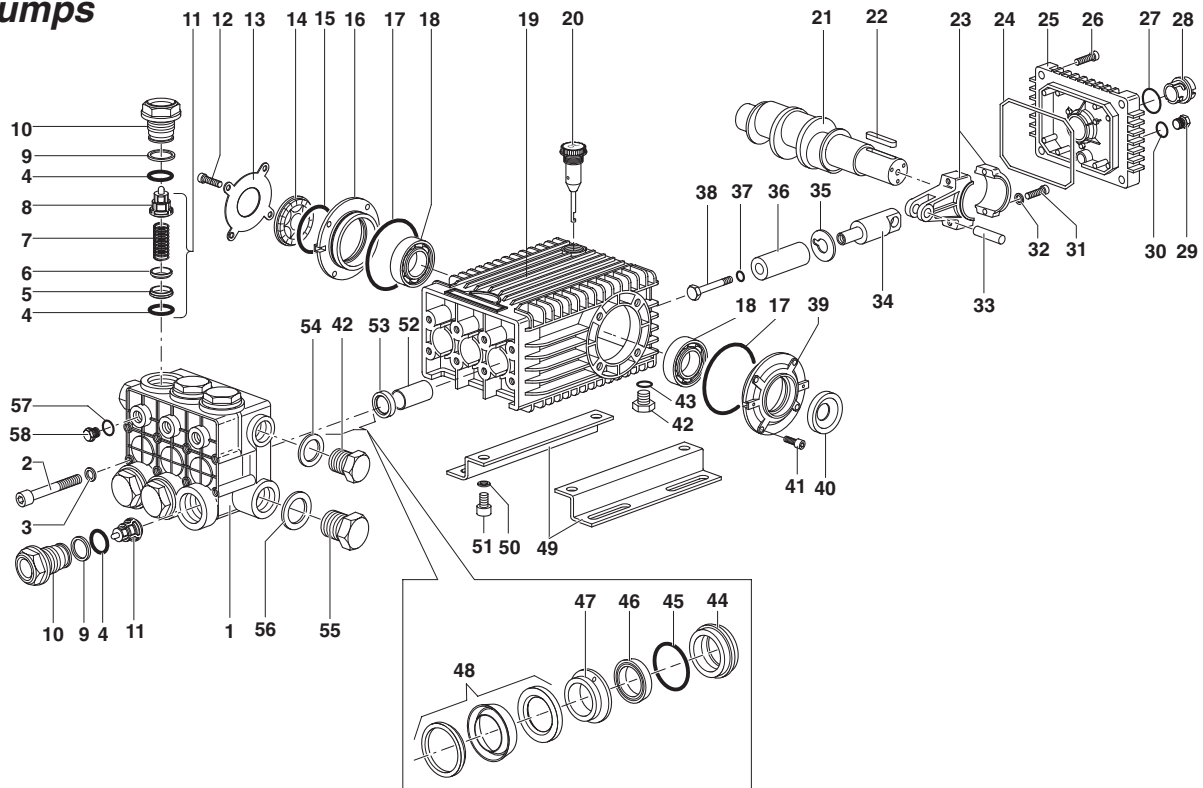
DIMENSIONAL DRAWING



66 Series

Triplex Pumps

GENERAL PUMP *A member of the Interpump Group*



PARTS LIST

| ITEM | PART NO. | DESCRIPTION | KIT | QTY. | ITEM | PART NO. | DESCRIPTION | KIT | QTY. | ITEM | PART NO. | DESCRIPTION | KIT | QTY. |
|------|----------|----------------------------|------|------|------|----------|---------------------------|-----|------|------|----------|------------------------|------------|------|
| 1. | 66120041 | Manifold 20mm | | 1 | 22. | 91489200 | Key | | 1 | 44. | 66080170 | Seal Retainer 22mm | K173 | 3 |
| | 66120141 | Manifold 22mm | | 1 | 23. | 66030001 | Connecting Rod | | 3 | | 66080070 | Seal Retainer 20mm | K171 | 3 |
| 2. | 99380100 | Headbolt M10 x 90 | | 8 | 24. | 90392200 | O-ring | | 1 | 45. | 90361600 | O-ring | K173, K171 | 3 |
| 3. | 96710400 | Washer M10 | | 8 | 25. | 66160000 | Cover, Crankcase | | 1 | 46. | 90271500 | LP Seal 22mm | K172, K173 | 3 |
| 4. | 90385700 | O-ring | K169 | 12 | 26. | 99188400 | Screw M6 x 20 | | 4 | | 90269000 | LP Seal 20mm | K170, K171 | 3 |
| 5. | 36203366 | Valve Seat | K169 | 6 | 27. | 90405100 | O-ring | | 1 | 47. | 66216170 | Intermediate Ring 22mm | K173 | 3 |
| 6. | 36203476 | Valve Poppet | K169 | 6 | 28. | 63210051 | Sightglass, Bayonet style | | 1 | | 66216070 | Intermediate Ring 20mm | K171 | 3 |
| 7. | 94738800 | Valve Spring | K169 | 6 | 29. | 98204100 | Plug 1/4 x 9 | | 1 | 48. | 90271700 | HP Seal 22mm | K172, K173 | 3 |
| 8. | 36203551 | Valve Guide | K169 | 6 | 30. | 701013 | O-ring | | 1 | | 90269200 | HP Seal 20mm | K170, K171 | 3 |
| 9. | 90516500 | Anti-ext ring | | 6 | 31. | 99309900 | Screw M8 x 35 | | 6 | 49. | 47200074 | Pump Rail | | 2 |
| 10. | 66130041 | Valve Cap | | 6 | 32. | 96701400 | Locking Washer M8 | | 6 | 50. | 96710600 | Washer M10 | | 4 |
| 11. | 36712701 | Valve Assy., Complete | K169 | 6 | 33. | 97740500 | Wrist Pin | | 3 | 51. | 99364400 | Screw M10 x 18 | | 4 |
| 12. | 99306900 | Screw M8 x 25 | | 4 | 34. | 66050064 | Piston Guide | | 3 | 52. | 90912600 | Guide Bushing | | 3 |
| 13. | 66150274 | Cover | | 1 | 35. | 96710100 | Flinger Washer | | 3 | 53. | 90162500 | Seal, Plunger Rod | K02 | 3 |
| 14. | 44211801 | Sightglass | | 1 | 36. | 66040109 | Plunger 22mm | | 3 | 54. | 96738000 | Gasket, Aluminum 3/8" | | 1 |
| 15. | 90409700 | O-ring | | 1 | | 66040009 | Plunger 20mm | | 3 | 55. | 98226500 | Plug 3/4" x 16 | | 1 |
| 16. | 66150122 | Side Cover | | 1 | 37. | 90358400 | O-ring | | 3 | 56. | 96770000 | Gasket, Aluminum 3/4" | | 1 |
| 17. | 701147 | O-ring | | 2 | 38. | 66219566 | Plunger Bolt | | 3 | 57. | 701013 | O-ring | | 3 |
| 18. | 91838000 | Bearing | | 2 | 39. | 66150022 | Side Cover, PTO | | 1 | 58. | 98204300 | Plug 1/4" x 13 | | 3 |
| 19. | 66010022 | Crankcase | | 1 | 40. | 90164800 | Seal, Shaft | K03 | 1 | | | | | |
| 20. | 98210600 | Dipstick, vented | | 1 | 41. | 99303900 | Screw M8 x 16 | | 4 | | | | | |
| 21. | 66020435 | Crankshaft TSF2019 TSF2219 | | 1 | 42. | 98210000 | Plug 3/8 x 13 | | 2 | | | | | |
| | 66020035 | Crankshaft TSF2021 TSF2221 | | 1 | 43. | 90383300 | O-ring | | 1 | | | | | |

REPAIR KITS

| Kit | K02 | K03 | K169 | K170 | K171 | K172 | K173 |
|---------------|-----|-----|----------------|-------|----------------|-------|----------------|
| Model | All | All | All | 20mm | | 22mm | |
| Item included | 53 | 40 | 4,5,6,7,8 (11) | 46,48 | 44,45,46,47,48 | 46,48 | 44,45,46,47,48 |
| Qty req'd | 1 | 1 | 1 | 1 | 3 | 1 | 3 |

TORQUE SPECS*

| Pos. | N-M | Ft.-lbs. |
|------|-----|----------|
| 2 | 45 | 33.2 |
| 10 | 130 | 95.9 |
| 12 | 20 | 14.8 |
| 26 | 10 | 7.4 |
| 29 | 20 | 14.8 |
| 31 | 20 | 14.8 |
| 38** | 20 | 14.8 |
| 41 | 20 | 14.8 |
| 42 | 40 | 29.5 |
| 51 | 40 | 29.5 |
| 55 | 70 | 51.6 |
| 58 | 40 | 29.5 |

*Decrease torque by 20% if threads are lubricated.
**Use Loctite 542

