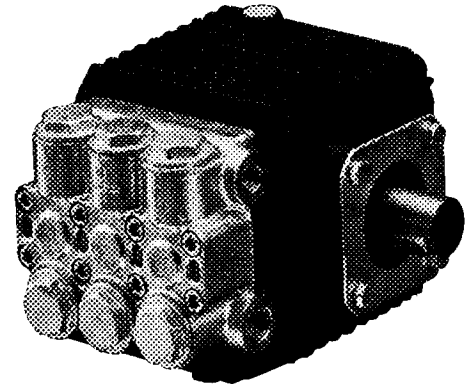


FEATURES

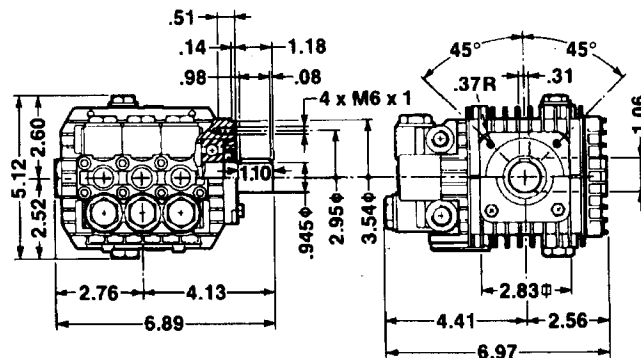
- Forged brass manifold with exclusive lifetime warranty
- Die cast, anodized aluminum, oil-bath crankcase
- Solid ceramic plungers with continuously lubricated packings
- The original Interpump unitized, stainless steel, K01 inlet and outlet valves
- Ideal for all general cleaning applications
- Standard with 24 mm solid shaft for pulley mount or direct drive with flex coupler and bell housing
- Also available in “L” left-handed versions

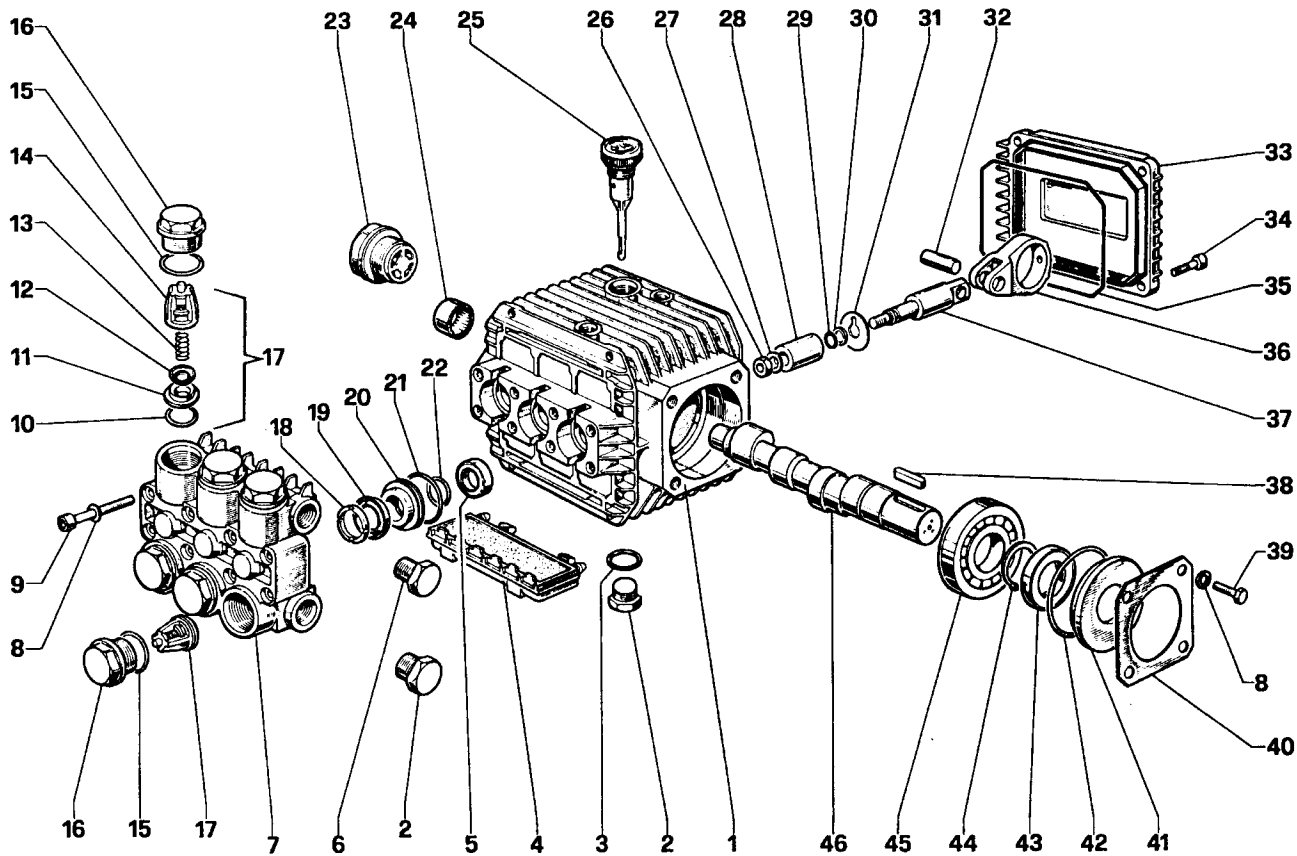


SPECIFICATIONS

| Pump Model | TT901 | TT931 | TT941 | TT951 | TT9111 |
|----------------------------|--------------------------|-----------|------------|------------|------------|
| Maximum Volume | 2.11 GPM | 2.9 GPM | 3.43 GPM | 2.5 GPM | 3.0 GPM |
| Maximum Discharge Pressure | 1500 PSI | | | | |
| Maximum Pump Speed | 2800 RPM | 2800 RPM | 2800 RPM | 2800 RPM | 1750 RPM |
| Maximum Inlet Pressure | 125 PSI | | | | |
| Maximum Inlet Vacuum | 3 ft. water (2.6 in. Hg) | | | | |
| Bore (in./mm) | .591 / 15 | .591 / 15 | .591 / 15 | .591 / 15 | .708 / 18 |
| Stroke (in./mm) | .236 / 6 | .315 / 8 | .370 / 9.4 | .283 / 7.2 | .370 / 9.4 |
| Crankcase Oil Capacity | 11.2 oz. | | | | |
| Maximum Fluid Temperature | 165°F | | | | |
| Inlet Port Thread | 3/8-19 BSPP-F | | | | |
| Discharge Port Thread | 1/4-19 BSPP-F | | | | |
| Shaft Diameter | .945 in. / 24 mm | | | | |
| Weight | 11.2 lbs. | | | | |
| Dimensions | 7.0 x 6.9 x 5.1 in. | | | | |

DIMENSIONAL DRAWING





PARTS LIST

| ITEM | PART NO. | DESCRIPTION | KIT NO. | QTY. | ITEM | PART NO. | DESCRIPTION | KIT NO. | QTY. | ITEM | PART NO. | DESCRIPTION | KIT NO. | QTY. |
|------|------------|--------------------------|---------|------|------|------------|--------------------------|-------------|------|------|------------|----------------------------|---------|------|
| 1. | 51.0106.22 | Crankcase | | 1 | 18. | 51.1000.51 | Head Ring | 96,97 | 3 | 31. | 96.7070.00 | Flinger Washer | | 3 |
| 2. | 98.2100.00 | Plug | | 2 | | 51.1001.51 | Head Ring (T9111) | 140,141 | | 32. | 97.7310.00 | Connect Rod Pin | | 3 |
| 3. | 90.3833.00 | O-Ring | | 1 | 19. | 90.2620.00 | Packing | 96,97 | 3 | 33. | 51.1600.22 | Crankcase Cover | | 1 |
| 4. | 51.2091.02 | Protector | | 1 | | 90.2681.00 | Packing (T9111) | 140,141 | | 34. | 99.1867.00 | Screw | | 4 |
| 5. | 90.1565.00 | Oil Seal | 83 | 3 | 20. | 51.0800.70 | Packing Retainer | 86,96 | 3 | 35. | 90.3917.00 | Cover O-Ring | | 1 |
| 6. | 98.2041.00 | Plug | | 1 | | 51.0803.70 | Pack. Ret. (T9111) | 139,140 | | 36. | 51.0300.22 | Connecting Rod End | | 3 |
| 7. | 51.1200.22 | Manifold, Alum. | | 1 | 21. | 90.3604.00 | O-Ring | 86,96,97 | 3 | 37. | 51.0500.56 | Connecting Rod | | 3 |
| | 51.1200.41 | Manifold, Brass | | | | 90.3604.00 | O-Ring (T9111) | 139,140,141 | | 38. | 91.4878.00 | Key | | 1 |
| | 51.1204.41 | Manifold, Brass (TT9111) | | | 22. | 90.3835.00 | O-Ring | 86,96,97 | 3 | 39. | 99.1807.00 | Screw | | 4 |
| 8. | 96.6938.00 | Washer | | 8 | | 90.3843.00 | O-Ring | 189,140,141 | | 40. | 50.1500.74 | Retainer | | 1 |
| 9. | 99.1943.00 | Screw | | 8 | 23. | 97.5968.00 | Sight Gauge | | 1 | 41. | 50.2115.51 | Spacer | | 1 |
| 10. | 90.3841.00 | O-Ring | | 1 | 24. | 91.8015.00 | Needle Bearing | | 1 | 42. | 90.4097.00 | O-Ring | | 1 |
| 11. | 36.2003.66 | Valve Seat | | 1 | 25. | 98.2103.00 | Oil Dip Stick | | 1 | 43. | 90.1634.00 | Oil Seal | | 1 |
| 12. | 36.2001.76 | Valve Plate | | 1 | 26. | 92.2216.00 | Nut | | 3 | 44. | 90.0635.00 | Snap Ring | | 1 |
| 13. | 94.7376.00 | Spring | | 1 | 27. | 96.7008.00 | Washer | | 3 | 45. | 91.8329.00 | Bearing | | 1 |
| 14. | 36.2002.51 | Valve Cage | | 1 | 28. | 51.0400.09 | Plunger – 15 mm | | 3 | 46. | 51.0200.35 | Crankshaft (TT901) | | 1 |
| 15. | 90.3847.00 | O-Ring | 84 | 6 | | 51.0401.66 | Plunger – 18 mm (TT9111) | | | | 51.0201.35 | Crankshaft (TT931) | | |
| 16. | 98.2218.00 | Valve Cap | 84 | 6 | 29. | 90.3572.00 | O-Ring | | 3 | | 51.0204.35 | Crankshaft (TT941, TT9111) | | |
| 17. | 36.7032.01 | Valve Assy. | | 1 | 30. | 90.5022.00 | Back Up Ring | | 3 | | 51.0217.35 | Crankshaft (TT951) | | |

REPAIR KITS

| KIT NO. | 1 | 83 | 84 | 86 or 139 | 96 or 140 | 97 or 141 |
|--------------------------------------|------------------------------|----|--------|--------------|------------------------|------------------|
| ITEM NO.s INCLUDED IN KIT | 10, 11, 12 13, 14 (17) | 5 | 15, 16 | 20, 21 22 | 18, 19 20, 21 22 | 18, 19 21, 22 |
| NUMBER OF ASSEMBLIES IN KIT | 6 | 3 | 6 | 3 | 1 | 3 |
| NUMBER OF CYLINDERS KIT WILL SERVICE | 3 | 3 | 3 | 3 | 1 | 3 |

TORQUE SPECS*

| Position | Ft.-lbs. |
|----------|----------|
| 2 | 29.4 |
| 6 | 14.7 |
| 9 | 8.8 |
| 16 | 33.1 |
| 23 | 13.2 |
| 26 | 11.0 |
| 34 | 7.3 |
| 39 | 7.3 |

*Decrease torque by 20% if threads are lubricated.