

**FEATURES**

- The SR is a pressure relief valve which permits regulation of the bypass pressure:
  - As a pressure relief and regulating valve, for flow rate of 1.6 to 5.5 GPM
  - As a pressure relief valve only, for flow rates up to 10.8 GPM
- Brass and stainless steel construction

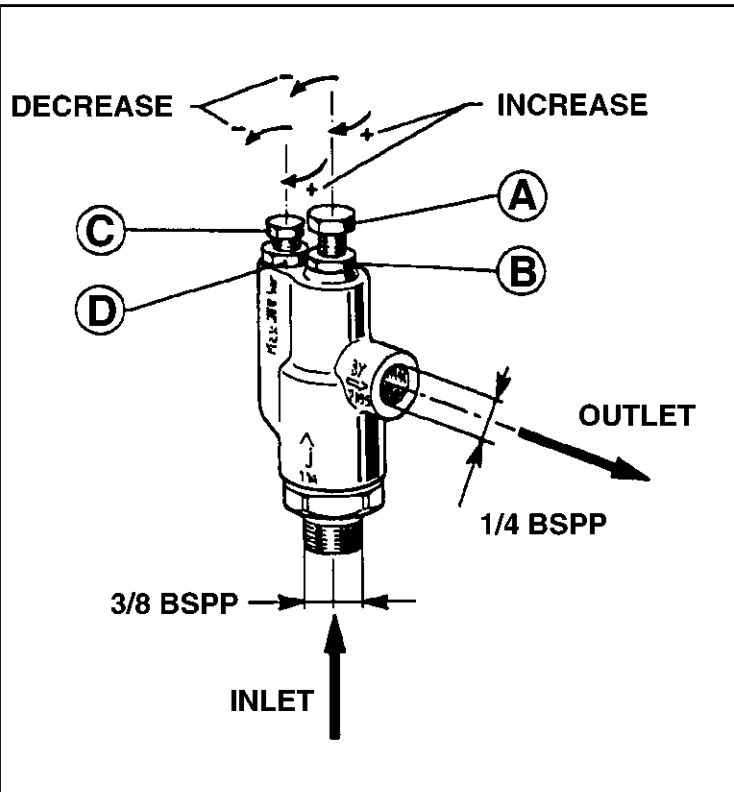
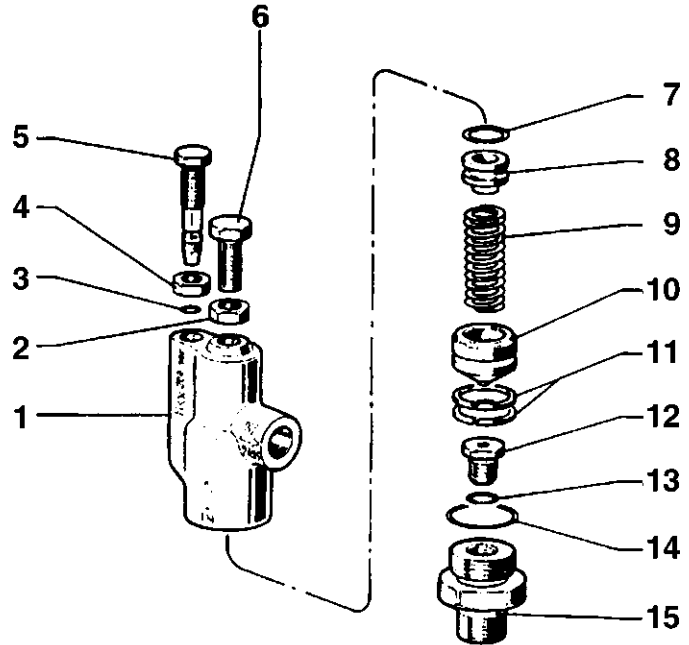
**SPECIFICATIONS**

Part Number:	ZKSR
Volume	Pressure Relief Valve: 0 – 10.8 GPM Regulating Valve: 1.6 – 5.5 GPM
Maximum Pressure	3,000 PSI
Port Size: Inlet	3/8" M
Bypass	1/4" F
Weight	1 lb.
Materials	Brass, Stainless Steel

### Pressure Relief / Regulating Valve

#### PARTS LIST

No.	Part No.	Description	Qty.
1.	36.2596.41	Valve Body	1
2.	92.2218.00	Locking Nut	1
3.	90.3566.00	O-Ring	1
4.	92.2200.00	Locking Nut	1
5.	36.2600.70	Bypass Regulation Screw	1
6.	99.3056.00	Pressure Regulation Screw	1
7.	90.3825.00	O-Ring	1
8.	36.2601.70	Spring Plate	1
9.	94.7396.00	Spring	1
10.	36.2602.02	Piston	1
11.	92.7707.00	Ring	1
12.	36.2598.66	Valve Seat Insert	1
13.	90.3578.00	O-Ring	1
14.	90.3600.00	O-Ring	1
15.	36.2597.70	Valve Seat	1



#### HOW TO ADJUST THE ZKSR VALVE

- Start Up Settings:** Completely loosen screw "A." Loosen screw "C" approximately 5 turns from the position of maximum tightness.
- Adjustment of Working Pressure:** Start up the pump with the gun open. The water flow will be intermittent. Tighten screw "A" until the flow stabilizes. To be sure that the valve will shut off properly, tighten this screw an additional 1/2 turn. Open and close the gun 4 or 5 times to be sure the water flow remains steady. If the flow is not steady, tighten screw "A" an additional 1/2 turn. Do not tighten beyond this point. Lock regulation screw "A" with locking nut "B."
- Adjustment of Bypass Pressure:** Close the gun. The recirculating bypass flow will be pulsating. Tighten screw "C" until the bypass flow stabilizes. Lock regulation screw "C" with locking nut "D."